

SWINDON TOWN



FOOTBALL CLUB

Official Programme

6d.

furniture and furnishings of charm and distinction

**contractors to Government departments
Hospitals and Borough Councils**

carpets - floorcoverings - loose covers
curtains - skilled workshop repair service
and removals

Mills & Merricks Ltd

16/17 BRIDGE STREET SWINDON

Telephone 5365/6

SATURDAY, 28th DECEMBER, 1963

DIVISION TWO

SWINDON TOWN

v.

NORWICH CITY

Kick-off 3 p.m.

REFEREE:

Mr. J. R. OSBORNE (Ipswich)

LINESMEN:

Red Flag—Mr. J. L. SIER (Worcester)

Yellow Flag—Mr. A. R. Walker (Bournemouth)

**Wiltshire's most versatile
Printers**

THE BOROUGH PRESS

Eastcott Hill, Swindon

Telephone 4022

Maylott Studios

For GROUP & SPORT Photographs

●
Official Photographer to
Swindon Town Football Club
●

31 FARINGDON ROAD

TEL. 22792

Notton's Cafe

COUNTY ROAD

200 yards from Ground

●
RIGHT ON THE BALL

L. Wollen

OFF LICENCE

WINES and SPIRITS

Arkell's Ales and Stout

373 Cricklade Rd., Swindon

Deliveries Daily

Phone 3508

C. DUNN & SON

Builders & Decorators

Alterations, Renovations,
Conversions, Plumbers &
Sanitary Engineers

503 CRICKLADE RD. Tel. 22522

W. COLLINS (Swindon) LTD.

TURF ACCOUNTANTS

69 COMMERCIAL ROAD - SWINDON

TEL. 21333

SWINDON TOWN FOOTBALL COMPANY LIMITED

Registered Office: COUNTY GROUND, SWINDON.

Directors:

Mr. W. J. CASTLE (Chairman)

Mr. H. E. LANE (Vice-Chairman)

Mr. B. T. HAMILTON (Hon. Treasurer)

Messrs. C. CHANDLER, J.P., J. DAVIES,

R. FRICKER, C. J. GREEN, F. PLYER, H. WILLIAMS and K. H. WILMER

Manager: B. J. HEAD

Secretary: R. A. MORSE

VOL. 14

SATURDAY, DECEMBER 28th, 1963

No. 15

CLUB NOTES

Our last home game was most enjoyable from every aspect. A fine display of extremely fast, open football by both teams. Thrills and spills, and near misses in each goalmouth, and how quickly play travelled from end to end. One minute the home side desperately defending, then two or three quick moves, and almost a goal: so it was with both teams.

Portsmouth were a fine side, hard and fast, who found their men well. Not a real foul throughout the game. It was a pleasure and a delight to witness such a match. Games such as that would soon dispel all this talk of dwindling crowds.

The National Press is giving a great deal of coverage to football in general, support, and, of course, a "Super" League.

We have no desire to enter into this controversy, only to say that the body responsible for organising and running league football in this country is the Football League. That in itself is composed of the clubs themselves. It is therefore the clubs, and they only, who run football in England today.

WILSONS (SWINDON) LTD.

BUILDERS OF MODERN ATTRACTIVE
HOUSES AND BUNGALOWS

Enquiries to:

HEAD OFFICE: 90 COMMERCIAL ROAD, SWINDON 6361

SITE OFFICE: COVENTRY FARM ESTATE, WROUGHTON 271

SITE OFFICE: QUEENSFIELD ESTATE, STRATTON S.M. 3405

The Rendezvous of all Sportsmen -

THE CROWN INN

(Host: Frank Plyer)



Arkell's Best Ales :: Fully Licensed
Snacks, etc.



Stratton St. Margaret Tel. 2339

Always at your service

L. BIBBY

For all Types—Rags, Iron and Metal,
etc. Spot Cash Paid. Please Tel. 2101
and our van will call.

THE PADDOCK, ERMIN STREET
STRATTON ST. MARGARET

WISES CATERING SERVICE

(Reg. Wise)

Our Caterer for the past 15 seasons
Guarantees

**A GOOD CUP OF TEA AT THE
COUNTY GROUND**

A full range of Sweets & Cigarettes
at any of our five kiosks on your
way in. **ENJOY YOURSELF**

For Best Quality Wet Fish

9 a.m. - 6 p.m. (except Mondays)

YORK ROAD FISHERIES

Frying Mid-day Tuesday, Thursday,
Friday and Saturday

PHONE 3680

MARSHGATE GARAGE

Motor Engineers :: Rootes Group Dealers

STRATTON ROAD - SWINDON - WILTS.

Tel. Swindon 22788

TWO MINUTES FROM GROUND

CLUB NOTES—CONTINUED

Whatever might be said about Super Leagues and top class football, most clubs today have at the back of them a great tradition, which means much. It would be a thousand pities to destroy the well-known names which have been a power in English football for almost a hundred years—Notts County, Preston, West Ham, etc.

Although it may sound very much like partisanship, supporters prefer to see **their** team. Our supporters want to see Swindon, Reading people Reading; even Torquay and Exeter supporters get a greater "kick" out of watching their own players than other clubs. It has often been said by many people that they get greater enjoyment out of watching their own team than such important games as even the Cup Final.

The crowning of the first "Football Queen" at the Supporters' Club Dinner was a great success. Miss Pat Reade seems to have changed the fortunes of the club, as her first appearance in the Directors' Box coincided with the victory over Portsmouth.

It is good to know that she is not only interested in Swindon Town, but also local amateur football. We wonder who is now going to be the "tea-boy" for West Swindon, a team which plays on Mannington Recreation ground. This club sprang from a social and recreational organisation composed mainly of boys and girls in the Rodbourne Road area. It has strong associations with Swindon Town F.C., as Ernie Hunt, Michael Summerbee, and Keith Colsell have had interests and connec-

PANKHURST

The Palace - Gorse Hill - Swindon

CARS - VANS - MOTOR CYCLES

SCOOTER AND THREE-WHEELER SPECIALISTS

Open Mon. to Sat. 9 a.m. - 8 p.m.

Phone 5466

Suppliers to the Town —

Swindon Sports Centre

SUPPORTERS' SCARVES - RATTLES - Etc.

114 COMMERCIAL ROAD

Tel. 4270

B. J. MARTIN & SONS LTD.

Butcher

**10 HIGH STREET
MARLBOROUGH**

Phone 212

**126 VICTORIA ROAD
SWINDON**

Phone 4860

ESTABLISHED 1923

DOBELL SHEARMAN

& CO. LTD.

£10 TYPEWRITERS from £10

Also full selection new standard and portable typewriters

OFFICE EQUIPMENT

26 High Street & 33 Faringdon Road, Swindon.

Tel. 4961/2

CLUB NOTES—CONTINUED

tions with the social side. Long may Queen Pat bring fame and fortune, not only to Swindon Town F.C., but also West Swindon Club, its Borough League and District League sides.

Our opponents today bring back vivid memories of sterling battles fought at the County Ground and at Carrow Road. We well remember a cup-tie played at Swindon the year Norwich City won promotion to Division 2.

Today they are managed by Mr. R. Ashman, who for many years gave yeoman service as an outstanding player and captain, mainly in the left-back position.

This is the last game of 1963—a year which will long be remembered in the history of Swindon Town. The year certainly has been one of success for the Football Club, promotion from the Third Division and a magnificent beginning to the season—the first nine games played without defeat. May 1964 see the fortunes improved even more.

To everyone may we say simply: Health and Happiness throughout the coming year!



OUR VISITORS

It is our pleasure to welcome the Directors, Officials and Players of Norwich City Football Club to the County Ground for this afternoon's game.

Our last meeting was Season 1959-60 in Division III, when the "Town" were beaten 1—0.

Details of the players from whom today's team will be selected are as follows:—

ALLCOCK, TERRY (Centre Forward)

Born Leeds. Previous club Bolton Wanderers (1952-58). Signed for Norwich, March, 1958. League and Cup appearances 229, goals 113. Leading scorer for past four seasons, in 1960-61 despite a broken leg that kept him out of the game for more than three months. Set up new scoring record for Canaries last season with 37 goals. Has played cricket for Norfolk as wicket-keeper-batsman.

BUTLER, BARRY (Centre Half)

Born Stockton-on-Tees. Previous club Sheffield Wednesday (1952-57). Signed for Norwich, August, 1957. League and Cup appearances 265, goals 3. Record run of 208 successive League and Cup games ended in 1961-62 when chosen for F.A. XI v. R.A.F. Missed most of last season because of knee operation and then broken leg, received in practice match at Gorleston. Combination appearances 5.

CONWAY, JIM (Centre Forward)

Crew-cut Scot signed from Glasgow Celtic for five-figure fee in April, 1961, but did not make League debut for City until 1961-62 season. League and Cup appearances 42, goals 12. Combination appearances 31, goals 18.

HILL, JIMMY (Inside Left)

Irish international, born Carrickfergus. Previous clubs Linfield, Newcastle United. Signed for Norwich as right winger, June, 1958 but converted to inside left, in which position he has been picked four times for Ireland. Nicknamed "Tiger" by his colleagues. League and Cup appearances 195, goals 66. Combination appearances 22, goals 14.

HILL, KEN (Wing Half)

Born Walsall. Seven years with the Fellows Park club, latterly as captain, with 115 League and Cup appearances for them. Signed for City for "substantial" fee July, 1963. Aged 25.

For Quality **FLOWERS - FRUIT - VEGETABLES**
FROZEN FOODS - PRE-PACKED FUELS

CLARKE'S of Old Swindon

Proprietors: A. G. G. and J. A. W. HUNT

64 DEVIZES ROAD - SWINDON

Phone 22337

ORDERS DELIVERED DAILY

SEA VIEW CAMP

Camp Road, Wyke Regis, Weymouth.

Tel. 3351

Site overlooks Chesil Beach - Ideal for Camping Parties

Also Modern Caravans for Hire

THE PORK SHOP

(Swindon Bacon Curing Co. Ltd.)

Specialists in

BACON - PORK - COOKED HAM

50 FLEET STREET - SWINDON

TEL. 22122

Meet your friends for an enjoyable evening at

THE KINGSDOWN ARMS

(Host A. W. Vann)

FULLY LICENSED - ARKELL'S BEERS

SNACKS - Etc.

STRATTON ST. MARGARET

Tel. 3283

OUR VISITORS—CONTINUED

KENNON, SANDY (Goal)

Born Johannesburg. Previous club Huddersfield (1956-59) from whom he was signed on a month's trial in February 1959. At end of trial period signed full time and made first senior appearance in F.A. Cup sixth round replay v. Sheffield United at Carrow Road. League and Cup appearances 205. Combination appearances 15.

MANNION, GERRY (Outside Right)

Born Burtonwood; signed by manager Archie Macaulay for £12,000 fee, from Wolves in August, 1961. Toured East Europe with England Under-23 party in 1960. In Wolves' F.A. Cup semi-final team, 1960. League and Cup appearances 57, goals 10. Combination appearances 20, goals 6.

METCALF, COLIN (Centre Half)

Born Norwich, joined City from local amateur football as an amateur in 1959-60. Signed as part-time professional, July, 1960; full-time professional, January, 1962. League debut v. Huddersfield at Carrow Road, September, 1962. League and Cup appearances 7. Combination appearances 85, goal 1.

MULLETT, JOE (Right Half)

Born Blackheath, Birmingham. Played for Birmingham 1955-59, signed for Norwich in January, 1959. Only five League appearances in first three seasons at Carrow Road, but then struck consistent first-team form and won regular place. League and Cup appearances 70, goals 2. Combination appearances 97, goals 3.

PUNTON, BILL (Outside Left)

Scot from Aberfeldy. Wanted by manager Archie Macaulay when playing, with Hill, for Newcastle United but had a season with Southend before following the Irishman to Carrow Road, in July, 1959. Handicapped several times in recent seasons by injury. League and Cup appearances 137, goals 21. Combination appearances 17, goals 2.

THURLOW, BRYAN (Full Back)

Another local product, born Loddon. Signed professional forms for City in July, 1954, soon after 18th birthday. Came to the fore during the F.A. Cup run of 1958-59 and went on tour of Far East and New Zealand in 1961. League and Cup appearances 210, goal 1. Combination appearances 93.

TREBLE CHANCE?

HOW ABOUT THIS:—

- ★ **SICKNESS BENEFIT DURING
ILLNESS OR ACCIDENT**
- ★ **SAVINGS EXCEEDING CONTRIBUTIONS**
- ★ **SECURITY FOR THE WHOLE FAMILY**

For full particulars apply to The Chief Secretary,
Holloway House, Stallard Street, Trowbridge, Wilts.
Your postage will gladly be refunded.

BRISTOL OMNIBUS CO. LTD.

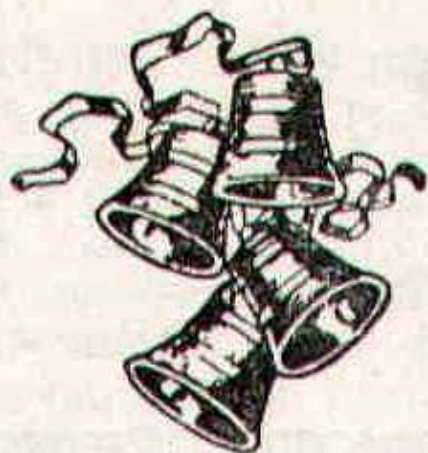
REGENT CIRCUS, SWINDON

Tel. 22243

For all your travel requirements

- ★ **Express Coach Service**
- ★ **British and Continental Holidays**
- ★ **Air Travel bookings**
- ★ **Butlin's Camps and Hotels**
- ★ **Bus Services in the West**

LUXURY COACHES FOR PRIVATE HIRE



W. J. CASTLE

Office and Bakery:
4 and 5 MARKET STREET

Branch:
57 BRIDGE STREET
SWINDON

Telephone 22017

Specialists —

BIRTHDAY CAKES - WEDDING CAKES
DAIRY CREAM - PASTRIES
BUNS - ROLLS - SPONGES

Do not let **CHILBAINS** spoil a good game



RELAPERNE

Price 2/6 from your CHEMIST

2/10 Post Paid from

BALLARD & CO. (CHEMISTS) LTD.

FARINGDON - BERKS

OUR VISITORS—CONTINUED

WORRELL, COLIN (Left Back)

Born Yarmouth and has made rapid progress from "B" team to League side. Joined Norwich as an amateur and after playing in the club's E.A. League side signed professional forms in November, 1961. Made his Combination debut that season and had his first League game last term at Leeds, in November. League and Cup appearances 5, Combination appearances 57.

BELL, JACKIE (Wing Half or Inside Forward)

Born Co. Durham. Previous club Newcastle United, from whom signed for five-figure fee in July, 1962. Joined Newcastle from school, became regular first-team player at St. James' Park and has been reserve for England Under-23 team. League and Cup appearances 21, goals 3. Combination appearances 19.

MILLER, ALISTAIR (Outside Left)

Scot signed on free transfer from St. Mirren in May, 1962. Five seasons with St. Mirren, making 160 appearances with 55 goals. Scottish Cup medal 1959. Previously three seasons with Third Lanark, whom he joined from junior football. League and Cup appearances 23, goals 2. Combination appearances 11, goals 2.

STATON, BARRY (Left Back)

Born Doncaster. Joined Doncaster Rovers from school, played Second, Third and Fourth Division football with them. Won England Boys and Youths caps as centre-half. Signed for Norwich, July, 1962. Handicapped for a time last season by injury. League and Cup appearances 31, goal 1. Combination appearances 10.

JONES, ALAN (Goal)

Born Wrexham. Previous clubs Cardiff City (he joined them from school) and Exeter City, with whom he spent three years — at first on loan — before signing for Norwich for a medium fee in July, 1962. Hit by injury for a time last season. League and Cup appearances 9, Combination appearances 19.

OLIVER, JIM (Utility Forward)

Born Maddiston, near Falkirk. Signed for Norwich for "substantial" fee from Falkirk in August, 1962. Played inside left, centre forward and outside right last season, when he made 32 League and Cup appearances, scoring 10 goals, including three against Stoke. Combination appearances 6, goals 4.

OUR VISITORS—CONTINUED

KELLY, PHIL (Right Back)

Born Dublin and capped five times by Eire; yet he never played soccer in Eire until picked by his country! Moved to Birmingham when young and was signed by Wolves when sitting in the West Bromwich Albion dressing rooms! Joined Norwich for "medium" fee in August, 1962 and quickly established himself in Canaries' League side. League and Cup appearances 45, goal 1. Combination appearances 4.

BRYCELAND, TOMMY (Inside Right)

City paid their record fee, a reported £20,000, to St. Mirren for Bryceland in September, 1962, and the Scot quickly "slotted in" with Hill to form, with Allcock, a most dangerous inside forward trio. Strongly recommended to City by ex-manager Bill Reid, Bryceland was signed by Reid for St. Mirren from Glasgow junior soccer. League and Cup appearances 39, goals 8.

SUTTON, MICHAEL (Utility Forward)

Local product who was at one time on the City groundstaff and then played his way, by way of the "B" team, to a professional contract in 1962. League debut at Walsall in May, 1963. League and Cup appearances 2, goal 1. Combination appearances 38, goals 7.

LLOYD, CLIVE (Inside Forward)

Welsh schoolboy international who became Norwich City's first apprentice professional during the managerial reign of Archie Macaulay. Signed as a full-time professional in 1962. Combination appearances 20, goals 7.

PRICE, RAY (Centre Half)

Born Co. Durham. Joined City as groundstaff youngster and played for them as an amateur before being signed as a full-time professional by acting-manager Ron Ashman in July, 1963. Combination appearances 8.

STRINGER, DAVID (Full Back or Centre Half)

One of the many promising youngsters to come from Gorleston in recent seasons. Capped for England Youth as an amateur, signed as full-time professional, May, 1963. Made seven Combination appearances last season at right back, played at centre-half in City's successful Norfolk Invitation Cup side.

H. HIBBERD LIMITED

40 NEWPORT STREET - SWINDON

PLANT HIRE

A black and white line drawing of two pieces of heavy construction equipment. On the left is a bulldozer with a large front blade and a person operating it. To its right is a scraper, which is a large machine with a deep front-mounted bowl for digging and moving earth. Both machines are shown from a side profile, facing left.

TRACTORS and SCRAPERS

BULLDOZERS

DOTT SHOVELS

J.C.B. and DINKUM DIGGERS

ROAD ROLLERS

TELEPHONE: SWINDON 6125

H. HIBBERD LIMITED

40 NEWPORT STREET - SWINDON

PLANT HIRE

A black and white line drawing of two pieces of heavy construction equipment. On the left is a bulldozer with a large front blade and a driver's cab. On the right is a scraper, which has a large front-mounted bowl for digging and a scraper blade at the rear. Both machines are shown from a side profile, facing left.

TRACTORS and SCRAPERS

BULLDOZERS

DOTT SHOVELS

J.C.B. and DINKUM DIGGERS

ROAD ROLLERS

TELEPHONE: SWINDON 6125

H. HIBBERD LIMITED

40 NEWPORT STREET - SWINDON

PLANT HIRE

A black and white line drawing of two pieces of heavy construction equipment. On the left is a bulldozer with a large front blade and a person operating it. To its right is a scraper, which is a large machine with a deep front-mounted bowl for digging and a scraper blade at the rear. Both machines are shown from a side profile, facing left.

TRACTORS and SCRAPERS

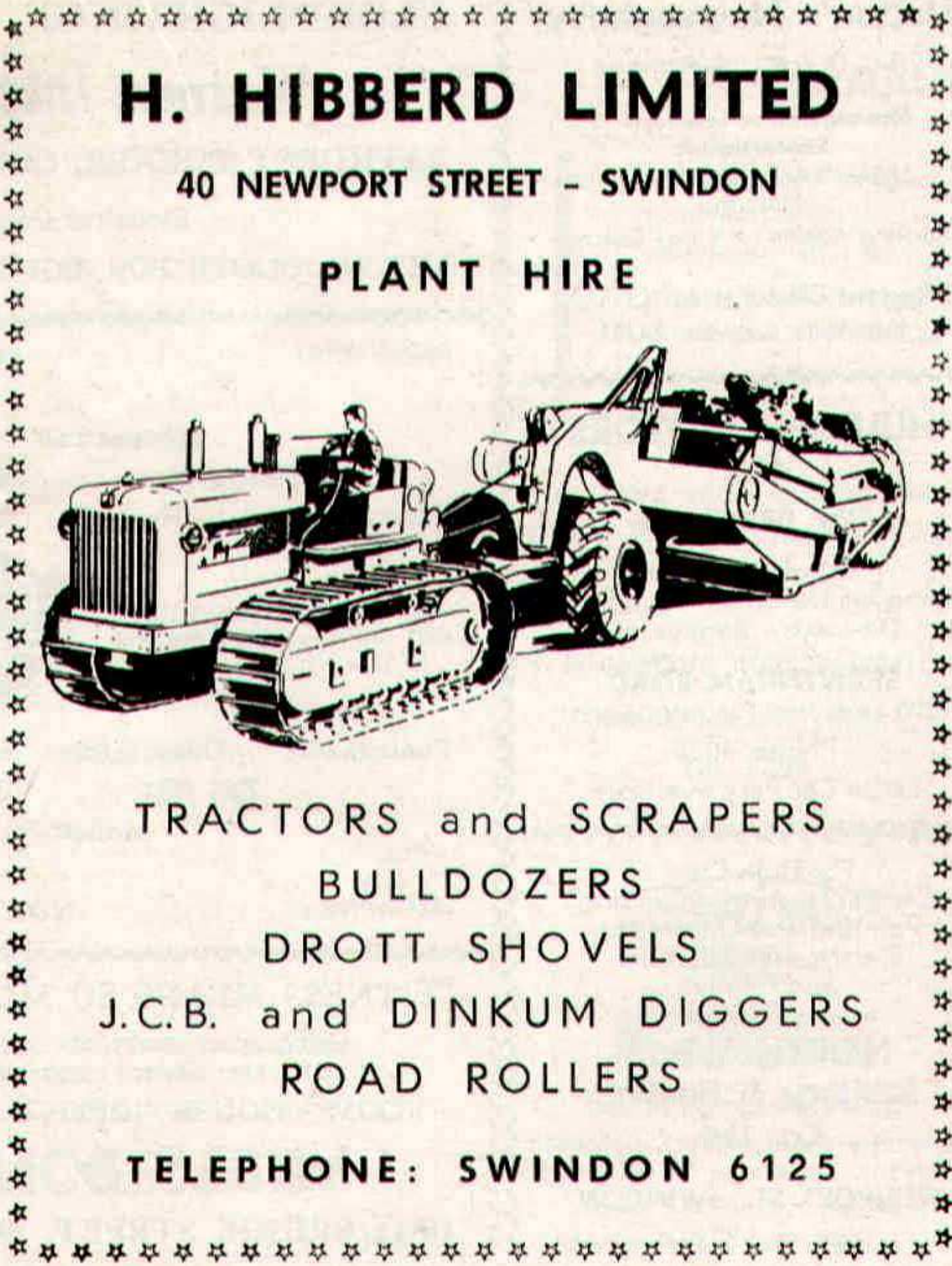
BULLDOZERS

DOTT SHOVELS

J.C.B. and DINKUM DIGGERS

ROAD ROLLERS

TELEPHONE: SWINDON 6125



H. HIBBERD LIMITED

40 NEWPORT STREET - SWINDON

PLANT HIRE

A black and white line drawing of two pieces of heavy construction equipment. On the left is a bulldozer with a large front blade and a driver's cab. To its right is a scraper, which has a large, rounded front bowl and a rear-mounted scraper blade. Both machines are shown from a side profile, facing left.

TRACTORS and SCRAPERS

BULLDOZERS

DOTT SHOVELS

J.C.B. and DINKUM DIGGERS

ROAD ROLLERS

TELEPHONE: SWINDON 6125

H. HIBBERD LIMITED

40 NEWPORT STREET - SWINDON

PLANT HIRE

A black and white line drawing of two pieces of heavy construction equipment. On the left is a bulldozer with a large front blade and a driver's cab. To its right is a scraper, which has a large, rounded front bowl and a rear-mounted scraper blade. Both machines are shown from a side profile, facing left.

TRACTORS and SCRAPERS

BULLDOZERS

DOTT SHOVELS

J.C.B. and DINKUM DIGGERS

ROAD ROLLERS

TELEPHONE: SWINDON 6125

H. HIBBERD LIMITED

40 NEWPORT STREET - SWINDON

PLANT HIRE

A black and white line drawing of two pieces of heavy construction equipment. On the left is a bulldozer with a large front blade and a driver's cab. On the right is a scraper, which is a large machine with a deep front-mounted bowl for digging and a scraper blade at the rear. Both machines are shown from a side profile, facing left.

TRACTORS and SCRAPERS

BULLDOZERS

DOTT SHOVELS

J.C.B. and DINKUM DIGGERS

ROAD ROLLERS

TELEPHONE: SWINDON 6125

H. HIBBERD LIMITED

40 NEWPORT STREET - SWINDON

PLANT HIRE

A black and white line drawing of two pieces of heavy construction equipment. On the left is a bulldozer with a large front blade and a person operating it. To its right is a scraper, which is a large machine with a deep front-mounted bowl for moving earth. Both machines are shown from a side profile, facing left.

TRACTORS and SCRAPERS

BULLDOZERS

DOTT SHOVELS

J.C.B. and DINKUM DIGGERS

ROAD ROLLERS

TELEPHONE: SWINDON 6125

H. HIBBERD LIMITED

40 NEWPORT STREET - SWINDON

PLANT HIRE

A black and white line drawing of two pieces of heavy construction equipment. On the left is a bulldozer with a large front blade and a driver's cab. On the right is a scraper, which is a large machine with a deep front-mounted bowl for digging and a scraper blade at the rear. Both machines are shown from a side profile, facing left.

TRACTORS and SCRAPERS

BULLDOZERS

DOTT SHOVELS

J.C.B. and DINKUM DIGGERS

ROAD ROLLERS

TELEPHONE: SWINDON 6125

H. HIBBERD LIMITED

40 NEWPORT STREET - SWINDON

PLANT HIRE

A black and white line drawing of two pieces of heavy construction equipment. On the left is a bulldozer with a large front blade and a driver's cab. On the right is a scraper, which is a large machine with a deep front-mounted bowl for digging and a scraper blade at the rear. Both machines are shown from a side profile, facing left.

TRACTORS and SCRAPERS

BULLDOZERS

DOTT SHOVELS

J.C.B. and DINKUM DIGGERS

ROAD ROLLERS

TELEPHONE: SWINDON 6125

Hatton's Newsagency

A. J. D. & N. J. Woodhouse

**Newsagents :: Tobacconists
Confectioners**

Agents for Wessex School of
Motoring

Booking Agents for Rimes Coaches

6 Regent Circus (near G.P.O.)

Telephone Swindon 22731

HULFORD MOTORS Ltd.

SELF DRIVE HIRE

Fleet of 1963 Fords
Anglias De-Luxe - Cortinas
De-Luxe - Zephyr 4s.

SHRIVENHAM ROAD

(200 yards from Football Ground)

Phone 4934

Large Car Park available

For High Class
Central Heating, Plumbing
Painting and Decorating
Electrical Installations
and Repairs

NORTH WILTS Sanitary & Heating Co. Ltd.

NEWPORT ST., SWINDON

Phone 5373/4

FLOODLIGHTING?

Warnes Installations

BATHURST CORNER, COUNTY DORSET

Electrical Contractors to

LET US QUOTE FOR YOUR ELECTRICITY

RIGHT WING

SWINDON

Turner

Dawson (2)

Morgan (4)

McPherson (1)

Summerbee (7)

Hunt (8)

Stevens (1)

Swindon Colours:
RED SHIRTS, WHITE SHORTS

**FOOTBALL
PINK**

Punton (11)

Oliver (10)

Davies (9)

Bell (6)

Butler (5)

Mullett (3)

Kennon

LEFT WING

NORWICH

"FITNESS MEANS SO MUCH"

Our expert team of carpet planning
staff are fit to carry out the carpeting of

ROOM - HOUSE - OFFICE - HOTEL

MILLS & MERRITT

16-17 BRIDGE STREET, SWINDON

G?

Installations Limited

COUNTY RD., SWINDON. Tel. 27291

Contractors to the "Town"

OUR ELECTRICAL CENTRAL HEATING

SWINDON

LEFT WING

Turner

2)

Trollope (3)

McPherson (5)

Woodruff (6)

Stevens (9)

Atkins (10)

Rogers (11)

**FOOTBALL
PINK**

These teams are subject
to alteration

Davies (9)

Bryceland (8)

Bonds (7)

Butle (5)

Hill (4)

3)

Kelly (2)

Kennon

NORWICH CITY

RIGHT WING

MUCH"

carpet planners, workroom and sales
try out the complete furnishing of a
ICE - HOTEL - HOSPITAL - FACTORY

MERRICKS LTD.

T, SWINDON.

Tel. 5365/6

McILROY'S

RESTAURANT

for morning coffee,
luncheon and
afternoon tea - in
pleasant surroundings -
you will find Mr Ilroys
are top of the
'league'.

Full table service, best Beers
and Wines. Parties and
Functions catered for.

McIlroys Restaurant

64-72 Regent Street

Tel. 5294



THE ALCOHOL FUEL

COATE GARAGE

REPAIRS - OVERHAULS - WELDING
SERVICING - REBORING - TYRES

Props. E. V. & W. H. Mattick

Marlborough Rd., Swindon

SUPPORTERS' CLUB NOTES

A feature of the life of Supporters' Clubs over the past few years has been the growth of social activities. This, no doubt, is a corollary of the increased interest shown by the ladies in football since the war.

One of the major social events in the calendar of our own Club is the annual Dinner and Dance which, this season, was held on 18th December, and proved to be a very enjoyable occasion, and was well attended.

His Worship the Mayor, Alderman C. W. J. Streetly, M.B.E., and the Mayoress were present, and also the Deputy Mayor, Councillor A. E. Cockram.

Both of these gentlemen are ardent followers of the Town F.C.

The speeches have been reported in the local Press, and they all reflected the spirit of goodwill and co-operation existing between the Football Club and our own organisation, and which we trust will continue to augur well for the future of football in the town.

We were very pleased to have with us the Directors, Management and players, and also Brian Jenkins (Swindon's international swimmer), with their ladies.

Mr. Jenkins had kindly consented to perform the coronation ceremony, following the selection of Swindon's Football Queen.

The Judges had an extremely difficult task in making their choice from the seven charming finalists, but ultimately selected Miss Pat Reade of 76 Akers Way, Moredon, Swindon, with Miss Angela Harris of 8 Manor Crescent, as runner-up, and Miss Jeanie Hooton of 39 High Street, Purton, in third place.

6d. SWINDON ECHO 6d.
FRIDAYS FRIDAYS

THE PAPER THAT FOLLOWS THE 'TOWN'

Regular Football Colour Pictures and Reports

Try us for
Clothes for all
the family on
all occasions

Little & Co. Ltd.

**31-32 FLEET STREET
SWINDON
Tel. 22831**

We have a
reputation for
Value & Service
that is second
to none

THE POPULAR MEN'S & LADIES' COMPLETE OUTFITTERS

SEE THE LOVELY SELECTION OF
CHOCOLATES AND SWEETS

Greetings Cards a Speciality

CECIL GREEN

CONFECTIONER AND TOBACCONIST

13 VICTORIA ROAD

Telephone 4416

The Advertisers in this programme have supported
the Club. Will you help us reciprocate by supporting
them whenever possible?

SUPPORTERS' CLUB NOTES—CONTINUED

We hope that Miss Reade's "coronation" will mark the commencement of a successful run for the team, and that she will prove a worthy mascot. She will have the privilege of watching matches from the Directors' Box.

Her personal prize was a £20 cheque, and she will also receive a small replica of the Cup.

The second and third prizes were cheques for £10 and £5 respectively.

The remaining finalists were Mrs. June Bratton of 13a Faringdon Road, Swindon, and the Misses Anne Harris of 34 Pewsham Road, Penhill, Wendy Coleman, 46 Oxford Road, and Judith Mullins of New House, Sevenhampton, Highworth. They each received a box of chocolates.

We are very grateful to these young ladies, and to the whole of the original contestants, for the sporting spirit in which they entered the competition, and without whom a very enjoyable event would have been impossible.

The thanks of the Club generally are also due to our Social Secretaries, Mr. and Mrs. W. P. Ranger, for their efficient organisation of the proceedings, and to our Honorary General Secretary, Mr. Jack Plunkett, who acted as M.C. for the Queen Contest, and who obviously enjoyed himself.

It was unfortunate that our Vice-Chairman, Mr. D. Pearce, was unable to take his rightful place amongst the Judges, but we are very pleased to know that he is recovering.

We think that there is just enough space to thank the B.B.C. for covering the event, and then we must conclude with our good wishes to all for 1964.

F. J. ROPER
Devizes Rd.
Swindon
Phone 22341

FERNDALE
FISHERIES
Ferndale Rd.
Swindon
Phone 3614

*Swindon's
Finest*
FISH and CHIPS

**CALL ON
YOUR
WAY
HOME**

F. J. ROPER
Cliftonian
38 William St.
Swindon
Phone 3785

**WE SHALL BE
WAITING
TO
SERVE YOU**

M e n u

**PLAICE
HAKE
COD
SKATE**

F. J. ROPER
High St.
W'tton Bassett

F. J. ROPER
Cross Hayes
Malmesbury

DIVISION II

	P	W	D	L	F	A	Pts.
Leeds United	22	13	8	1	39	15	34
Sunderland	24	14	5	5	42	27	33
Preston N.E.	23	12	8	3	44	33	32
Charlton Athletic	23	12	5	6	47	42	29
Swindon Town	23	11	6	6	35	25	28
Southampton	21	10	5	6	48	35	25
Portsmouth	24	9	7	8	43	37	25
Manchester City	22	9	6	7	42	34	24
Northampton Town	23	10	3	10	37	36	23
Newcastle United	23	10	3	10	41	41	23
Middlesbrough	22	9	4	9	40	27	22
Swansea Town	23	8	6	9	35	37	22
Rotherham Utd.	22	8	4	10	45	48	20
Norwich City	23	7	6	10	40	43	20
Cardiff City	21	7	6	8	32	38	20
Derby County	22	7	6	9	24	32	20
Leyton Orient	22	7	6	9	24	34	20
Huddersfield Tn.	23	7	4	12	30	39	18
Scunthorpe United	20	5	5	10	18	25	15
Bury	22	6	3	13	30	42	15
Grimsby Town	23	4	7	12	25	47	15
Plymouth Argyle	24	2	7	15	23	52	11

Eric

(E. Ayliffe)

GENTLEMEN'S HAIRDRESSER

57/59 Faringdon Road, Swindon.

Phone 4569

APPOINTMENTS MAY BE BOOKED IN PRIVATE SALON

ALSTON & YOUNG LTD.

121-123 CRICKLADE ROAD, SWINDON. Tel. 6671

Scooter and Three-Wheeler Specialists

Main Agents - LAMBRETTA - VESPA - TROJAN

First class after sales service Open daily 9.0 a.m. to 7.30 p.m.



CLARK BROS. (Swindon) Ltd.

Building and Civil Engineering Contractors

**CONSULT US FOR
BUILDING AND CIVIL ENGINEERING
CONSTRUCTION IN ALL ITS PHASES**

**STRATTON ROAD
SWINDON**

**Telephone
Swindon 3417/8/9**

F.A. CUP
SWINDON TOWN
v.
MANCHESTER CITY
Saturday, January 4th, 1964
Kick-off 3 p.m.

Stand tickets for this game will be available only for Season Ticket holders. It is regretted that "B" issue Season Ticket holders will be unable to obtain a ticket because a full allocation of tickets was made to Manchester City.

Season Ticket holders must claim their seats not later than Tuesday, December 31st.

When claiming seats, the Season Ticket must be produced. It is regretted that only personal applications can be considered.

Tickets will be on sale from today until December 31st.

BRETTS PET AND GARDEN SUPPLIES

32-33 Commercial Rd.
Swindon

6 Cromwell St.
Swindon

HOLMES & LUCAS

For a complete range of the very latest in radio,
television and all domestic appliances

Home demonstrations. Top Part Exchanges

HOLMES & LUCAS, 14 Regent Street Tel. 22526 & 4721

FOR ALL YOUR ANGLING NEEDS
CONSULT

FRANK WOODWARD

Swindon's Fishing Tackle Specialist

25 HAVELOCK ST., SWINDON
PHONE 3879

For Paints of Good Quality

H. S. HODGES & SONS (SWINDON) LTD.

CRICKLADE RD., SWINDON
PHONE 22422

Dulux, Brolac, Friary, Valspar,
Wallcharm, etc.

SOUTHERN LAUNDRY Co. Ltd.

Launderers and Dry Cleaners

HAYDON ST. - SWINDON
TELEPHONE 4161

COMLEY'S

Modern Music Centre

26 HAVELOCK ST., SWINDON

RECORDS - MUSIC - INSTRUMENTS

Top Twenty 'Pops' always in stock
and wide selection of Jazz & Classics

Personal Supervision Phone 3874

FORTHCOMING MATCHES

SATURDAY, JANUARY 4th, 1964

F.A. CUP—THIRD ROUND

Manchester City

Kick-off 3 p.m.

SATURDAY, JANUARY 11th, 1964

FOOTBALL COMBINATION

Southampton

Kick-off 3 p.m.

SATURDAY, JANUARY 18th, 1964

DIVISION II

Leeds United

Kick-off 3 p.m.

**EDWIN H. BRADLEY
& SONS LTD.
OKUS - SWINDON**



**HOUSING ESTATES UNDER
DEVELOPMENT THROUGHOUT
THE COUNTRY**



**Full details from our Estate Office:
74 VICTORIA ROAD - SWINDON**

Telephone No. 5865

KEY OF THE BOARD

FIRST SECTION

- A—Aston Villa v. Wolverhampton W.
- B—Blackburn Rovers v. West Ham United
- C—Bolton Wanderers v. Sheffield Wednesday
- D—Chelsea v. Blackpool
- E—Everton v. Leicester City
- F—Ipswich Town v. Fulham
- G—Manchester United v. Burnley
- H—Sheffield United v. Notts Forest
- I—Tottenham Hotspur v. West Bromwich A.
- J—Charlton Athletic v. Swansea Town
- K—Derby County v. Middlesbrough
- L—Huddersfield Town v. Newcastle United
- M—Leyton Orient v. Grimsby Town
- N—Portsmouth v. Bury
- O—Preston N.E. v. Cardiff City
- P—Rotherham United v. Northampton Town
- Q—Sunderland v. Leeds United
- R—Bournemouth v. Brentford
- S—Bristol Rovers v. Port Vale
- T—Crystal Palace v. Southend United

SECOND SECTION

- A—Luton Town v. Millwall
- B—Mansfield Town v. Hull City
- C—Notts County v. Oldham Athletic
- D—Q.P.R. v. Bristol City
- E—Reading v. Colchester United
- F—Walsall v. Watford
- G—Barrow v. Tranmere Rovers
- H—Bradford v. Lincoln City
- I—Carlisle United v. Workington
- J—Doncaster Rovers v. Southport

T. QUALITY (Swindon) LTD.

Licensed Fruit, Vegetable and Potato Merchant

HOLBROOK STREET - SWINDON

Telephone Swindon 5446/7

G. A. STREETLY

Tobacconist and Confectioner

10 BOURNE ROAD - MOREDON - SWINDON

Telephone: 4956

"COAL!"
"COAL!"
"COAL!"

J. WILMER

St. Margaret's Road
Swindon

TELEPHONE 22535

LEESE, ING & CO. LTD.

Mineral Water and Squash Manufacturers

LANDDOWN ROAD - SWINDON

TELEPHONE 22744

Have you purchased your ticket for the

DEVELOPMENT FUND COMPETITION?

TICKETS 1/- each

Draw at half-time today for

£100

other Prizes Monday to Friday

£20 EACH DAY

Results published daily in —

“Daily Sketch”

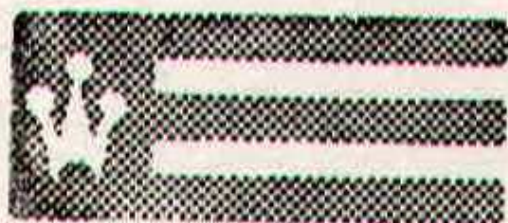
“Evening Advertiser” and

“Bristol Evening Post”

Competition Agents required—

Apply: Maurice Owen, County Ground, Swindon.

Suppliers to the Swindon Team and
Manager (Mr. Head) of FORD CARS
MAY WE SUPPLY YOU?



EARLE

of Chippenham Limited

MAIN



DEALERS

COCKLEBURY ROAD - CHIPPENHAM

Telephone 3255

DIVISION 2 FIXTURE LIST

Date	Opponents	Ground	Result
1963			
August 24	SCUNTHORPE UNITED	(H)	3-0
28	GRIMSBY TOWN	(A)	2-1
31	PORTSMOUTH	(A)	4-1
September 3	GRIMSBY TOWN	(H)	2-1
7	ROTHERHAM UNITED	(H)	3-1
10	MANCHESTER CITY	(H)	3-0
14	LEEDS UNITED	(A)	0-0
18	MANCHESTER CITY	(A)	0-0
21	SUNDERLAND	(H)	1-0
25	CHELSEA (League Cup)	(H)	3-0
28	NORTHAMPTON TOWN	(A)	0-4
October 1	CHARLTON ATHLETIC	(H)	2-2
5	BURY	(H)	2-1
12	PRESTON NORTH END	(A)	0-1
16	SOUTHEND (League Cup)	(H)	3-0
19	LEYTON ORIENT	(H)	5-0
26	PLYMOUTH ARGYLE	(A)	4-2
November 2	SOUTHAMPTON	(H)	1-2
9	MIDDLESBROUGH	(A)	1-1
16	(1) NEWCASTLE UNITED	(H)	0-0
19	WEST HAM UNITED (League Cup)	(H)	3-3
23	HUDDERSFIELD TOWN	(A)	0-2
25	WEST HAM UNITED (League Cup)	(A)	1-4
30	DERBY COUNTY	(H)	0-0
December 7	(2) SWANSEA TOWN	(A)	0-3
14	SCUNTHORPE UNITED	(A)	0-3
21	PORTSMOUTH	(H)	2-0
26	NORWICH CITY	(A)	
28	NORWICH CITY	(H)	
1964			
January 4	(3)		
11	ROTHERHAM UNITED	(A)	
18	LEEDS UNITED	(H)	
25	(4)		
February 1	SUNDERLAND	(A)	
8	NORTHAMPTON TOWN	(H)	
15	(5) BURY	(A)	
22	PRESTON NORTH END	(H)	
29	(6) NEWCASTLE UNITED	(A)	
March 7	PLYMOUTH ARGYLE	(H)	
14	(S.F.) CHARLTON ATHLETIC	(A)	
21	MIDDLESBROUGH	(H)	
27	CARDIFF CITY	(H)	
28	LEYTON ORIENT	(A)	
30	CARDIFF CITY	(A)	
April 4	HUDDERSFIELD TOWN	(H)	
11	DERBY COUNTY	(A)	
18	SWANSEA TOWN	(H)	
25	SOUTHAMPTON	(A)	
May 2	(FINAL)		

always on the ball

THE MIDLAND-WEST LANDSCAPE CO LTD

(formerly E. A. Roberts)

WESTBURY, BRACKLEY, NORTHANTS **Finmere 392**
109 NEW ROAD, WOOTTON BASSETT **Wootton Bassett 579**
88 HIGH STREET, PURTON

Agency:

JOHNSONS FRUIT SHOP, 30 HIGH STREET, WINCANTON 3383

- Complete Design and Landscape: Hotels, Factories, Bowling Green, and all Playing Fields maintained.
- Plants, Roses, Shrubs, Trees, Peat, supplied in season.
- Fencing of all kinds supplied and erected.
- Cotswold stone walls, Coloured Paving and Terraces our speciality.
- Contractors to County Councils.
- All work guaranteed
- ESTIMATES FREE

Gates from £3

Singles and Doubles

If you live in the Swindon area
we will measure your gateway
for you

Manufacturers of tip-up stadium
seating

Send for free catalogue

MARTYN LYNshaw LIMITED

20 Boundary Works

Stratton Road SWINDON 4177

